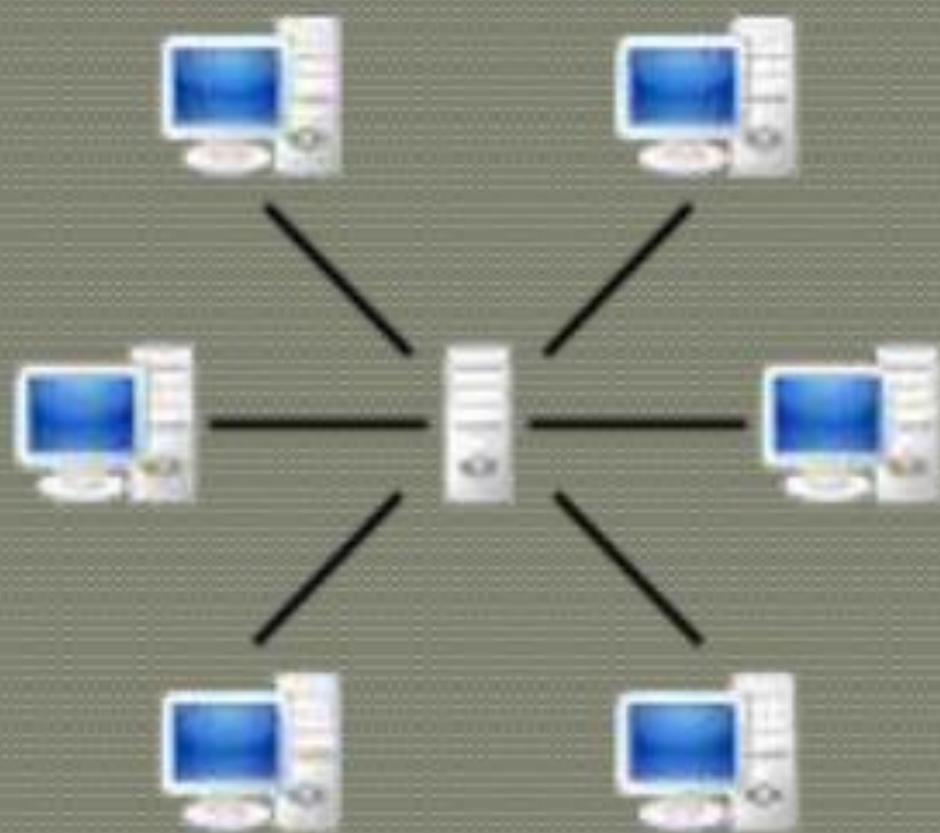


COMPUTER NETWORKING



INTRODUCTION

A computer network is a collection of interconnected computers and other devices which are able to communicate with each other. Also defined as - collection of hardware components and computers interconnected by communication channels that allow sharing of resources and information. Where at least one process in one device is able to send/receive data to/from at least one process residing in a remote device, then the two devices are said to be in a network

ADVANTAGES OF NETWORK

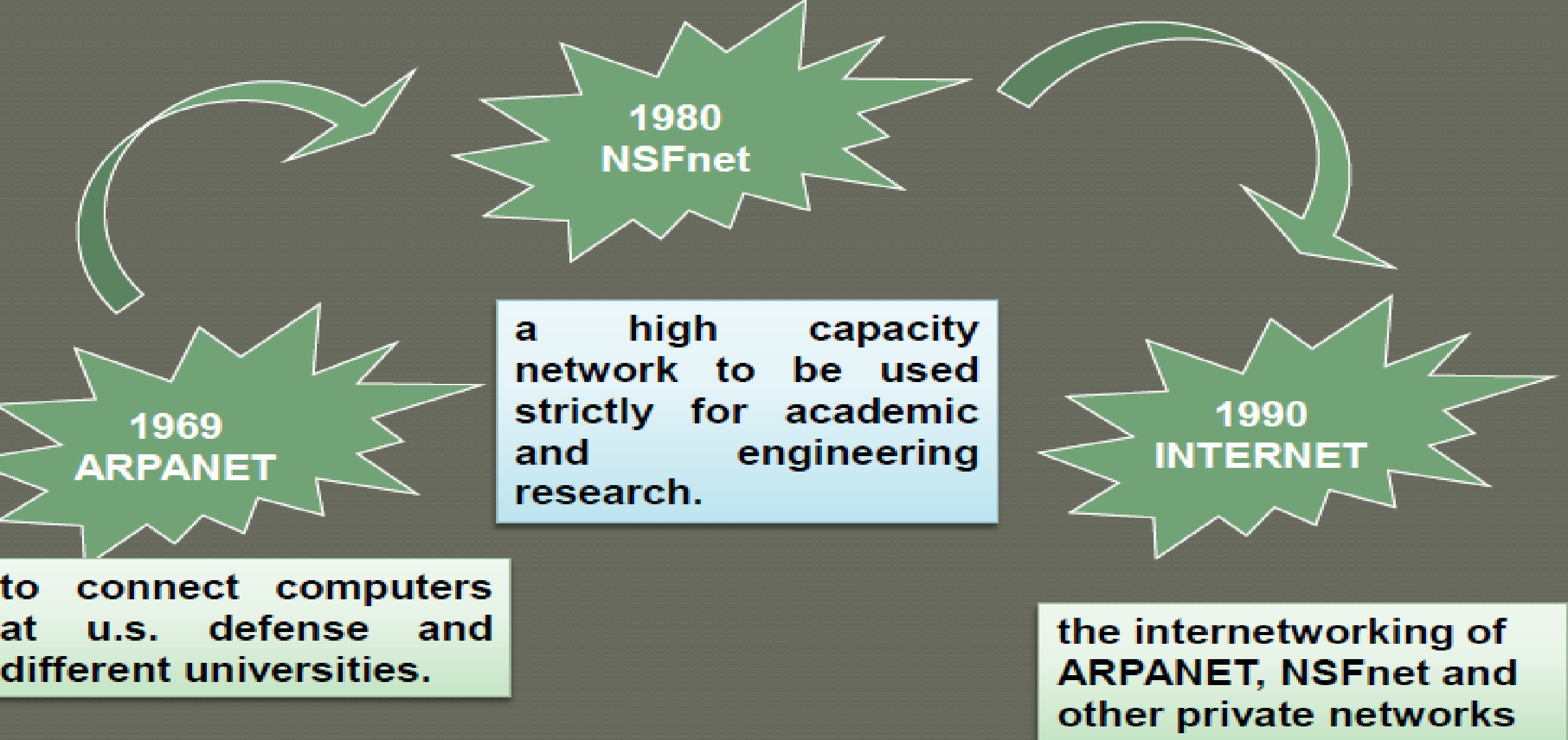
1. Resource Sharing
2. Cost Saving
3. Collaborative user interaction
4. Time savings
5. Increased storage

DISADVANTAGES OF NETWORK

- If network are badly managed, services can become unusable and productivity fails
- If software and files held centrally, it may be impossible to carry out any work if the central server fails.
- File security is more important especially if connected to WAN e.g. protection from viruses
- To handle network of organization you may need specialist staff to run the network

Evolution of Network

- 1969 - First network came into existence
- ARPANET – Advanced Research Project Agency Network
- MID 80'S - NSFNET (National Science Foundation Network)



INTERNET IS THE NETWORK OF NETWORKS.

Internet

- a global computer network providing a variety of information and communication facilities, consisting of interconnected networks using standardized communication protocols
- Network of Networks
- Popularly known as “NET”

Intranet

- Intranet is a local or restricted communications network, especially a private network created using World Wide Web softwares.
- It is managed by any person/ organization
- Intranet user can avail services of Internet whereas Internet user cannot access intranet directly.

Interspace

- Interspace is a client/server software program that allows multiple users to communicate online with real time audio, video and text chat in dynamic 3D environment.
- Online video conferencing is an example of Interspace.

Thanks